

# ALPINA DGA replica for BMW E30, E34



**⚠ Reminder:** Before any intervention on the electrical system of your vehicle, disconnect your battery.

## 1) Présentation :

Ideal to customize your BMW and keep its original style. This kit will bring performance and reliability to your vehicle.



Your kit consists of the following parts: 1 control unit, 2 temperature sensors, 1 pressure sensor, 3 beams, 1 vacuum gas hose, 1 T for the hose, 1 metric adapter to install the sensor temperature on differential, various supplies ...

### Strong points :

- Look OEM ALPINA
- Simple and fast installation
- Digital display
- Smart functions
- Temperature accuracy at +/- 1 ° Celsius
- Pressure accuracy at +/- 0.1 bar

The ALPINA replica unit indicates the following information:

- Engine oil temperature
- Differential oil temperature
- Engine oil pressure
- Admission Vacuum pressure



Functions:

- Start tone in 3 beeps: this means that the unit is well initialized
- Excessive oil temperature alarms: if the engine or differential oil temperature exceeds 130 ° Celsius then a notification will sound (3 beeps) and the value will blink
- Alarms on the oil pressure too low: if the oil pressure is lower than 0.6 bar then a notification will sound (3 beeps) and the value will blink

## II) Installation :

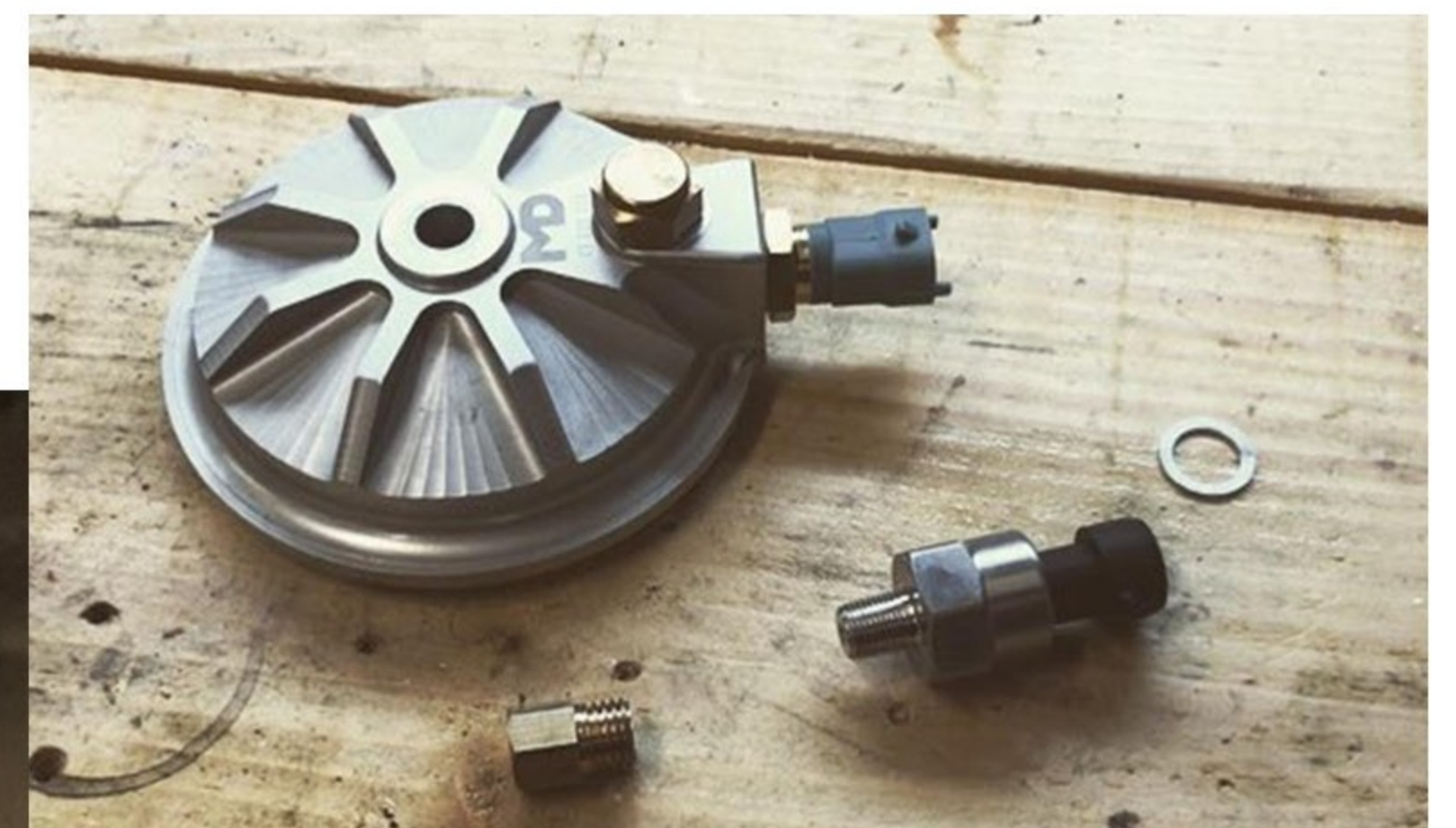
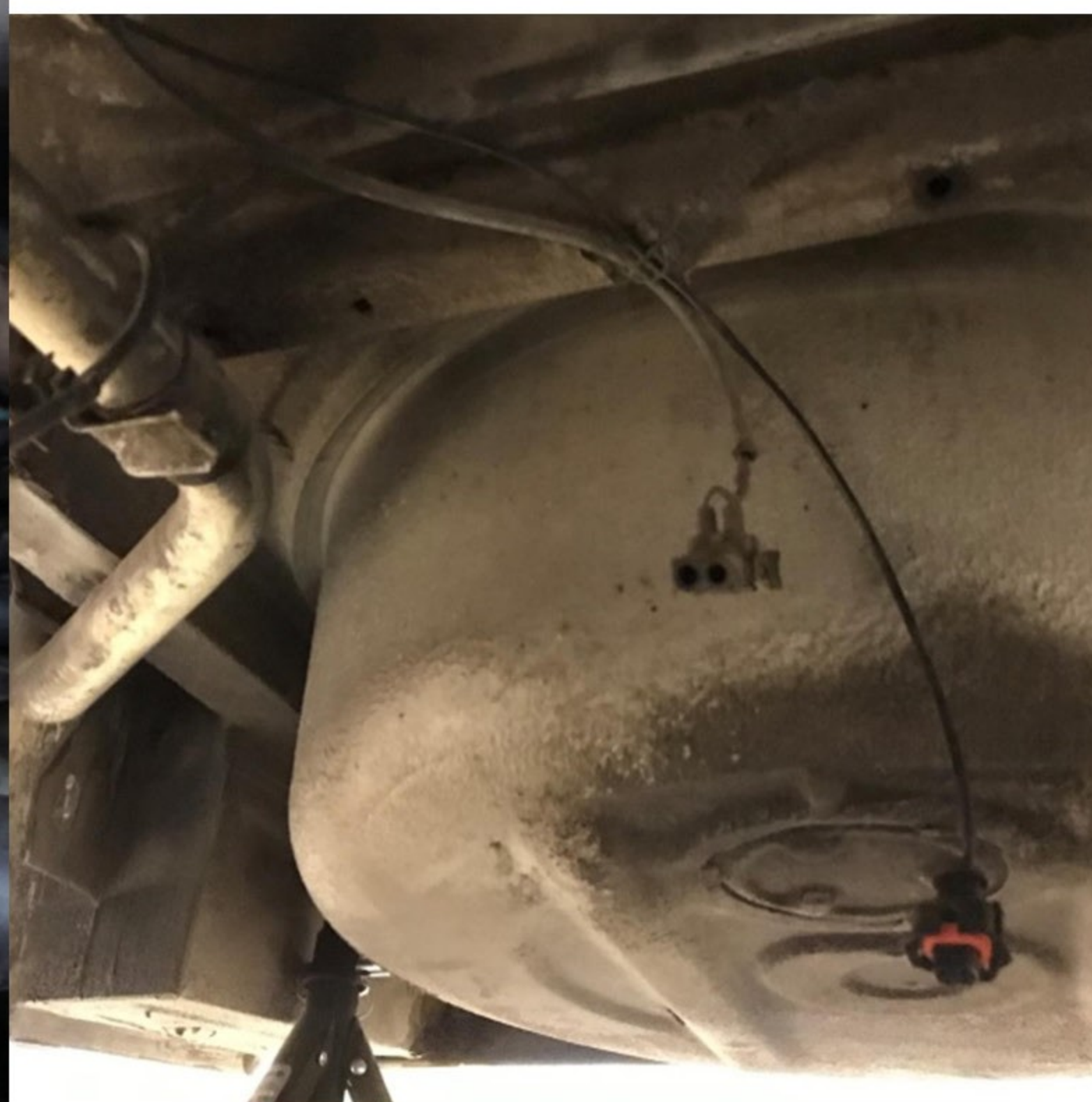
### Step 1 :

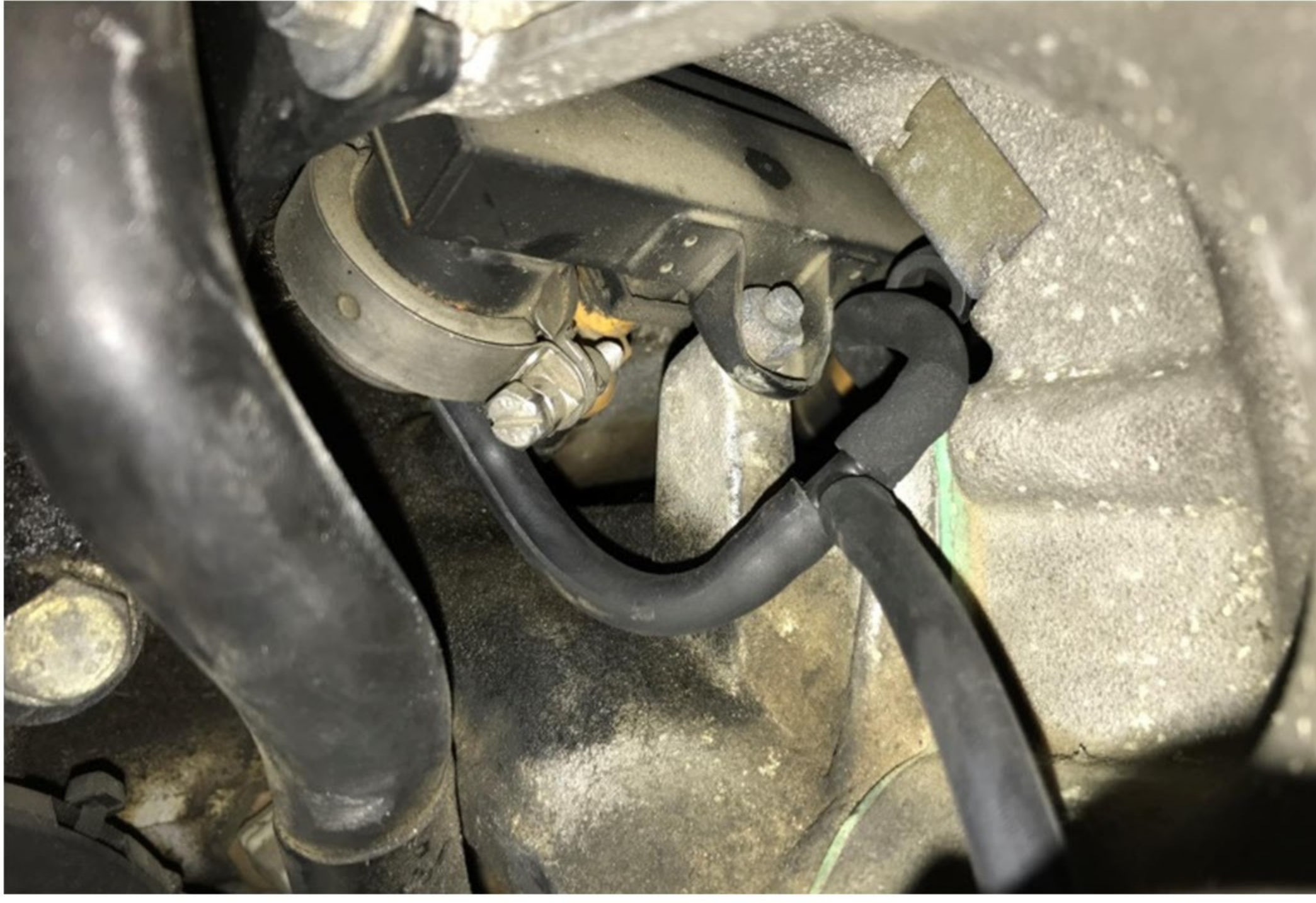
Remove the cover under the steering wheel of your BMW. Mark the main beam path (located above the pedal). Pass the beams of temperature sensors and oil pressure, intake pressure hose supplied through one of the available ports. To do this, cut a slit with a cutter. At the same time, install the differential oil temperature beam through the port under the rear seat.

Note: The 2 temperature beams have different lengths. The longest goes to the differential. Install the cable ties to prevent the beams from roaming.

### Step 2 :

Install the probes at the intended locations.





The intake gas pressure hose must be installed using the T-fitting on the hose leading to the fuel pressure regulator.

Step 3 :

Remove the car radio. Locating its power supply and ground: these are respectively the purple wire (after contact + 12V) and the brown wire (ground).



Step 4 :

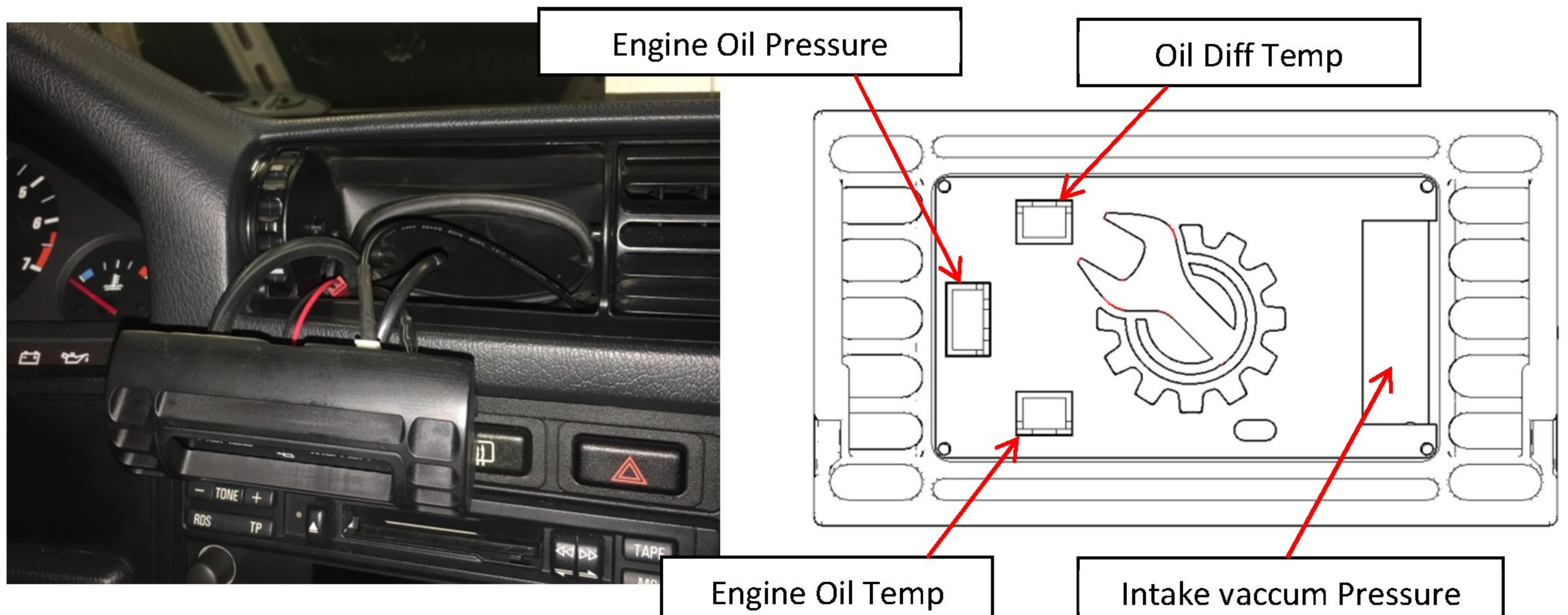
Connect the gauge to the power supply:

**Method 1:** Use the supplied quick connectors. To do this, put the signal wire of the gauge (red) in the blind hole of the connector and tighten it on the purple wire (+ 12V after ignition) using a pair of pliers. After properly tightening the connector, close the plastic housing. Similarly, connect the ground wire from the dipstick (black) to ground (brown).

**Method 2:** Soldering wires. Strip a section of about 5mm of purple cable, then tin the cable using a soldering iron and tin, solder the red / black wire of the dipstick (reminder: the red must be soldered to purple and black to brown). then, isolate the welds using a suitable insulating tape.

Step 5 :

Remove the vent. Carefully drill the ventilation block on the back of the grill. Bring the beams back to this hole. Connect the plugs to the unit.



### Step 6 :

Test the operation before reassembly:

- ➔ Connect your battery
- ➔ Connect the sensors to the previously installed beams
- ➔ Put the ignition in position 2: the unit must indicate the temperatures and pressures. If this is the case, go to step 7.

If this is not the case, either the temperature data intermittently indicates 150 and 999, which is the probable cause of the bad connection of the beam (s) to the unit. Make sure that the pins are in contact with the white connectors (pay attention to the direction of the connector). Either the kit does not turn on at all, probably because the red fast connectors are not sufficiently depressed. Also make sure that the battery is reconnected correctly.



### Step 7 :

Install the ALPINA unit in the location of the vent. Reassemble the car radio.

**WARNING: the ventilation flap behind the unit must be CONSTANTLY closed, for obvious reasons of overheating of the electronic components. This failure will not be taken into account in case of return.**